



Stanislaus & Tuolumne Rivers Groundwater Basin Association
Groundwater Sustainability Agency
1231 11th Street | Modesto, CA 95354
Email: strgba@mid.org

Well Mitigation Plan Workshop

October 15, 2025, 1:30 p.m.

<https://us02web.zoom.us/j/88949387476>

By phone: 1-669-900-9128

Webinar ID: 889 4938 7476

PUBLIC PARTICIPATION

The public may participate in this meeting in the three ways described below.

Instructions for Participating in the Workshop via Zoom Webinar or Phone

On your desktop/iPad or tablet/laptop:

1. To join the webinar, click the link published in the agenda for the current meeting about 5 minutes before the webinar begins.
2. Follow the on-screen instructions to install and/or launch the Zoom application.
3. If prompted, enter the webinar ID published on the agenda.
4. All public attendees will enter the meeting muted.
5. If you wish to speak under Business from the Public, or after the Chairman calls for public comment, click on the "Raise Hand" button to request to speak.

On your phone:

1. To attend the meeting by phone, call the number published in the agenda for the meeting.
2. Enter the webinar ID published in the agenda, then hit the # symbol.
3. All public attendees will enter the meeting muted.
4. If you wish to speak under Business from the Public, or after the Chairman calls for public comment, press *9 on your phone to "Raise Hand" or simply request to speak.

In person: Modesto Irrigation District Board Room, 1231 11th Street, Modesto

To view a physical copy of the agenda, please visit the Modesto Irrigation District office at 1231 11th Street, Modesto. A complete copy of the agenda packet is also available on www.strgba.org



**Stanislaus & Tuolumne Rivers Groundwater Basin Association
Groundwater Sustainability Agency**

1231 11th Street | Modesto, CA 95354
Email: strgba@mid.org

AGENDA

1. Call to Order/Welcome and Introductions
(Four agencies are needed for a quorum)
2. Business from the Public
Who: Public
Expected Outcome: Interested persons are welcome to introduce any topic within the GSA's jurisdiction. Matters presented under this heading may be discussed but no action will be taken by the GSA at this meeting. It is not required, but speakers may provide their name and address. Public Comments will be limited to five minutes per speaker.
3. Topic: Draft Well Mitigation Plan
Who: Todd Groundwater, Committee
Expected Outcome: Discussion
4. Next meeting
TBD
5. Committee Comments/Reports



MODESTO SUBBASIN GSP WELL MITIGATION PROGRAM

WORKSHOP 4

OCTOBER 15, 2025



RECAP

- Workshop #1 (February 2025) introduced Well Mitigation Plan concepts
- Workshop #2 (May 2025) discussed Plan elements with presentation by Self-Help Enterprises (SHE)
- Workshop #3 (July 2025) discussed Management Actions
- Released Draft WMP (October 1, 2025)

Objective of today's workshop:
to discuss the Draft WMP

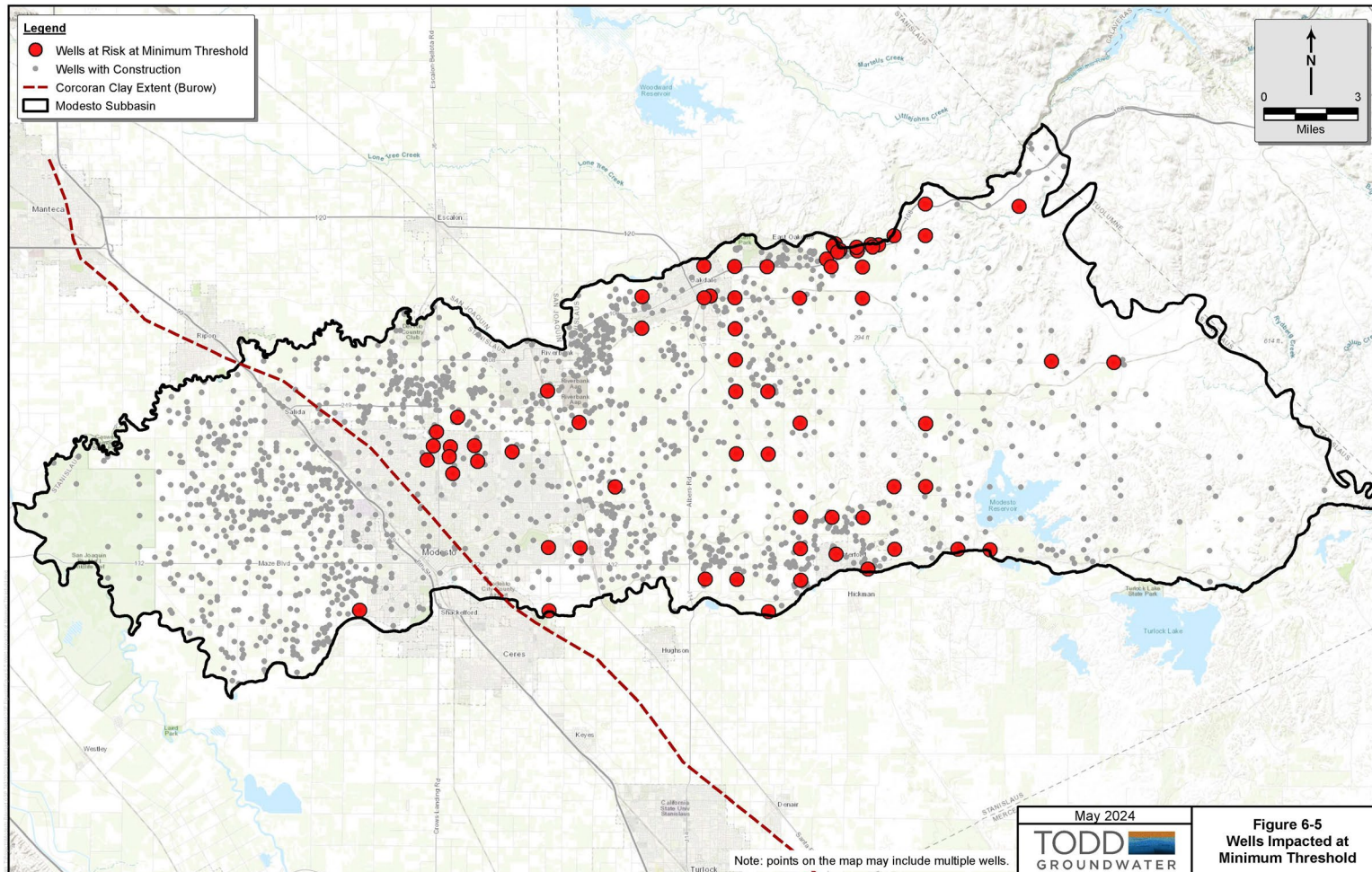
Why SHE?

- Administrative burden
- Recognize short term nature of program
- Adaptive approach to SHE involvement during program implementation

WHY DO WE NEED A WELL MITIGATION PROGRAM?

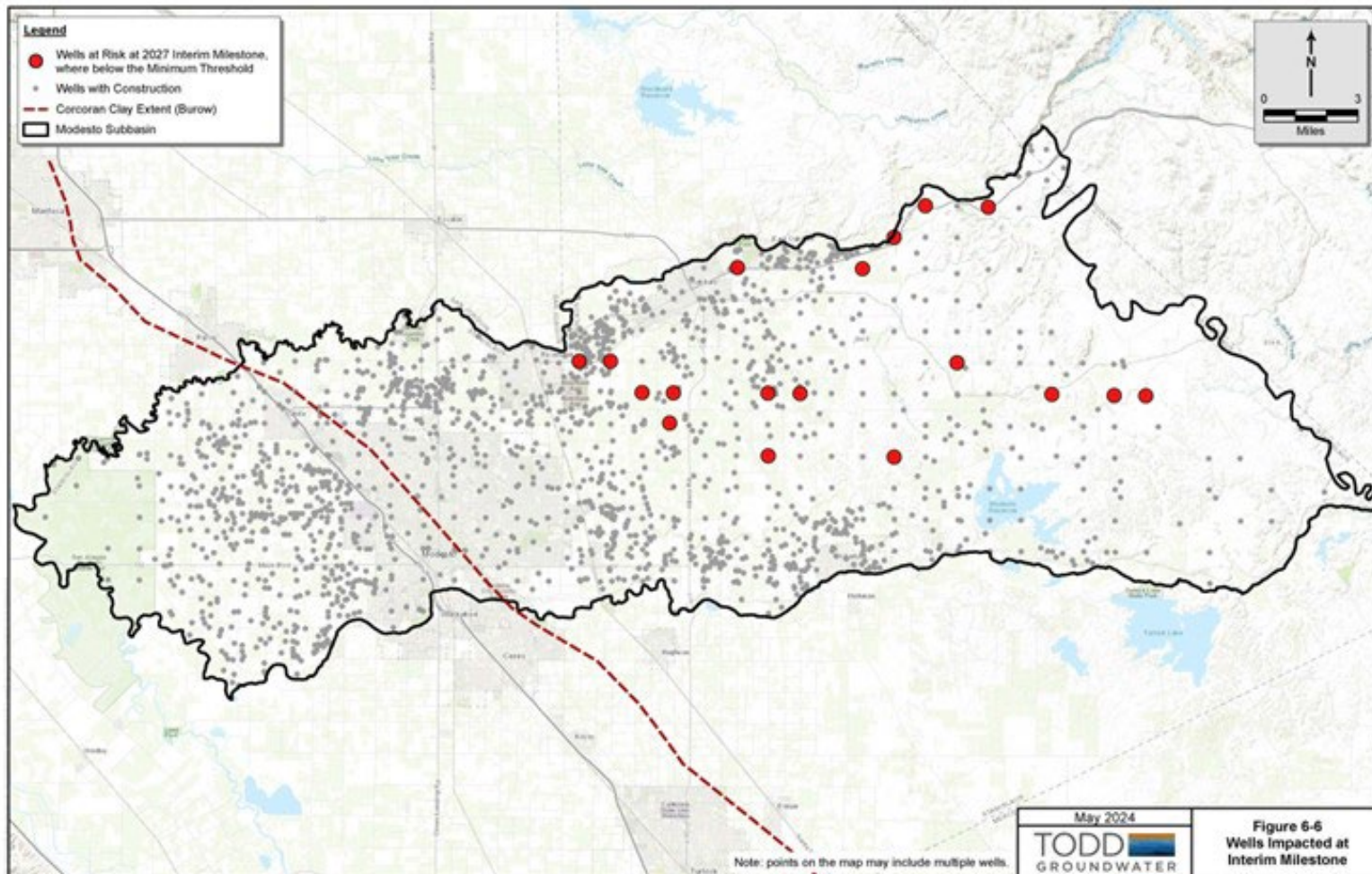
- Long-term groundwater level declines have occurred in the Non-District East Management Area and have impacted OID and MID Management Areas.
- 2027 Interim Milestones below the Minimum Threshold were developed for monitoring network wells within the NDE and OID management areas.
- Groundwater levels are anticipated to decline before recovering as a result of projects and management actions; recovery will take time.
- DWR requires that GSA provide mitigation for affected wells.
- Revised GSP includes an analysis of potential impacts to water supply wells due to groundwater levels decreasing to minimum thresholds (MTs) and reaching interim milestones (IMs).

WELLS IMPACTS ANALYSIS AT RISK AT MINIMUM THRESHOLD



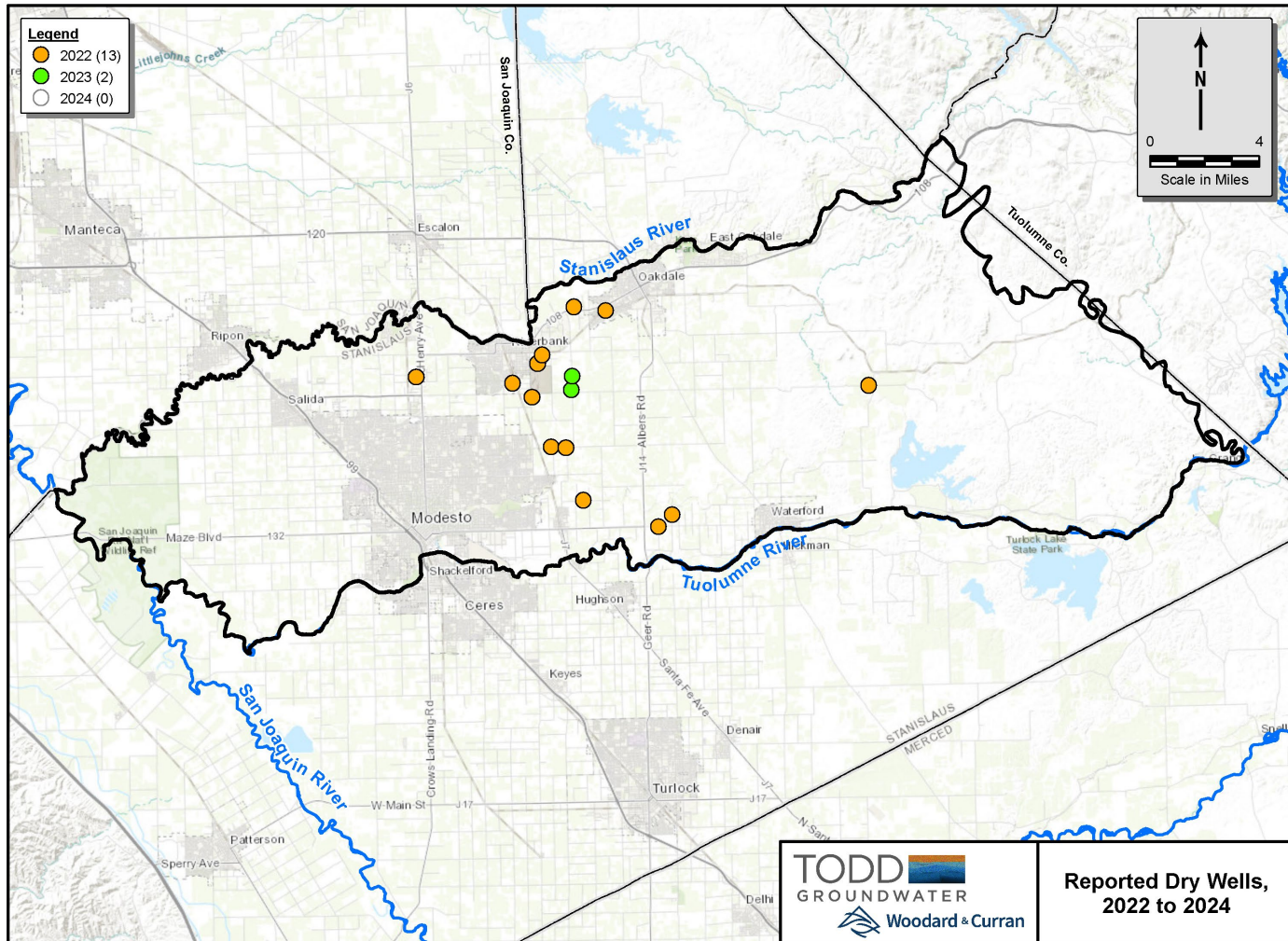
- Analysis includes 4,563 water supply wells (municipal, industrial, domestic, and agricultural)
- Analysis includes all water supply wells with construction information, regardless of well age or status
- Compared MT and IM elevations at the RMWs to total depth of water supply wells.
- 126 wells indicated to go dry when levels go below MT
 - Western Upper = 1
 - Western Lower = 0
 - Eastern = 125

WELLS IMPACTS ANALYSIS AT RISK AT INTERIM MILESTONE



- 29 wells indicated to go dry when levels go below MT to the IM
- 27 domestic wells
- 2 agricultural wells
- All dry wells in the Eastern Principal Aquifer
- Impacted wells are older and shallower than average age and depth of wells in the Subbasin

HOW MANY WELLS HAVE BEEN REPORTED DRY?



- Pre-GSP Adoption:
159 domestic wells reported dry or failed from 2014 to 2017
- Since GSP Adoption:
15 domestic wells reported dry or failed
 - 2022: 13 wells
 - 2023: 2 wells
 - 2024: 0 wells

WELL MITIGATION PLAN DOCUMENT

STRGBA GSA formed a Well Mitigation Plan Committee composed of representatives from MID, OID, and Stanislaus County

Over the last 9 months, the Well Mitigation Plan Committee developed a draft plan document based on 2024 Revised GSP and review of other WMPs



Stanislaus & Tuolumne Rivers
Groundwater Basin Association
Groundwater Sustainability Agency (GSA)

Modesto Subbasin

**Public Draft
Well Mitigation Plan**

TODD
GROUNDWATER

WELL MITIGATION PLAN: KEY TOPICS

- Purpose of Well Mitigation Plan - what is covered and what is not.
- Dry Well Services - what are they and who provides which services.
- Application Process - generally what it is and how it will roll out.

PURPOSE OF WELL MITIGATION PLAN

Purpose: to provide mitigation for drinking water wells having adverse impacts due to declining groundwater levels from groundwater management activities since the January 31, 2022, GSP adoption.

- ✓ Focused on domestic and small water system wells
- ✓ Due to basin management, not other problems
- ✓ Potential impacts to wells from water quality and subsidence caused by declining groundwater levels have not been documented
- ✓ After January 2022

DRY WELL SERVICES

- What services are provided for dry wells?
 - ✓ Emergency water supply (bottled water)
 - ✓ Interim short-term solutions (bottled water or filling a water tank)
 - ✓ Long-term solutions (deepen pump setting, deepen well, new well, connection to a water system)
- Self Help Enterprises (SHE) has substantial experience providing such services to domestic wells.
- Well Mitigation Plan Committee is working with SHE on revisions to a Draft Agreement.

APPLICATION PROCESS

- ✓ SHE has an application to document location, basic well/pump/facility information, right of entry, etc.
- ✓ SHE will review the application and if the well problem is possibly caused by GSA management, SHE will refer the case to the Well Mitigation Plan Committee.
- ✓ The Well Mitigation Plan Committee will establish a Technical Review Committee to review each application.
- ✓ Applicant must provide evidence demonstrating that the failure was caused by GSA management and allow onsite inspection.

ELIGIBILITY FOR GSA MITIGATION

- Well impacts that occurred after January 31, 2022, and were caused by GSA management.
- Applications for impacts that occurred between January 31, 2022, and the adoption of this program must be submitted within six months of the date of adoption of this program.
- Participation will not be limited or dictated by Landowner's income.
- Eligibility will be determined by Technical Review Committee. If eligible, maximum mitigation award will be \$40,000.

WHAT'S NEXT?

- Comments on Draft Well Mitigation Plan due October 24, 2025
- Adoption anticipated by STRGBA GSA Board in January 2026
- Agreement with SHE
- Finalization of the Well Mitigation Plan, continued public outreach, and online access to resources
- Implementation of the Well Mitigation Program by January 31, 2026, per STRGBA GSA Resolution No. 2024-01 (July 2024).